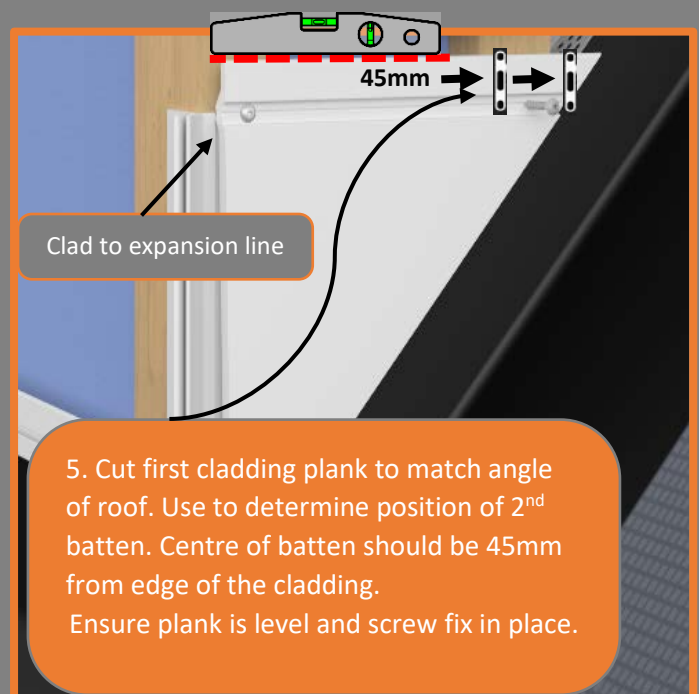
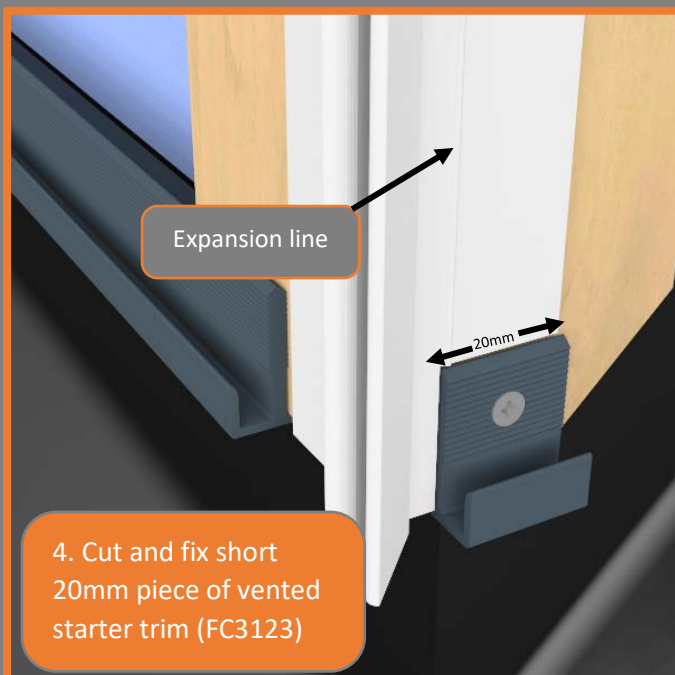
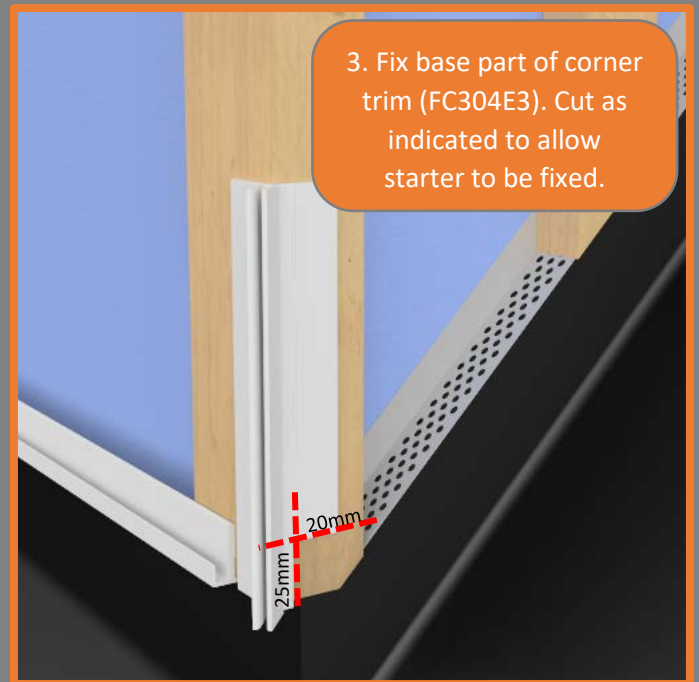
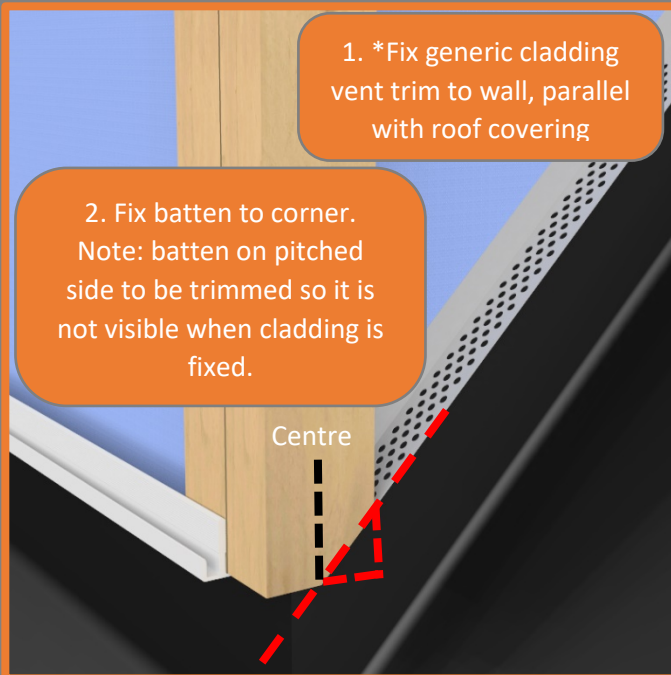
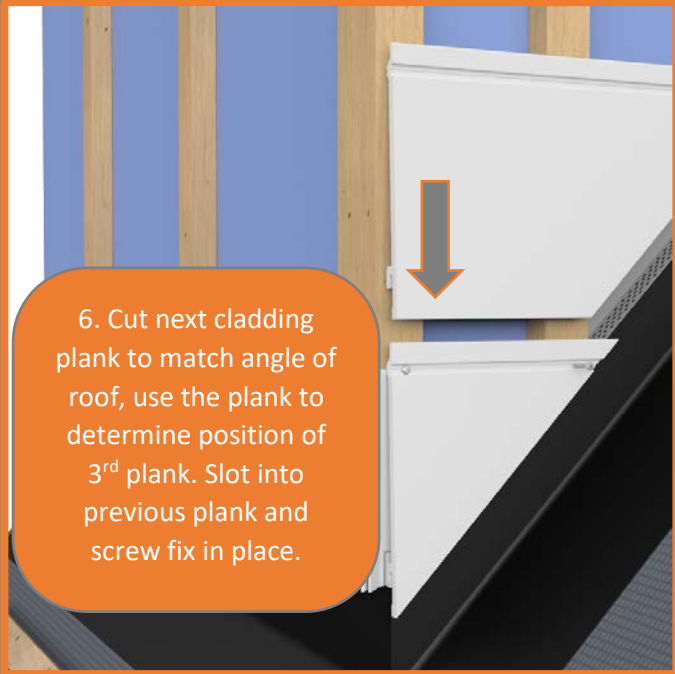


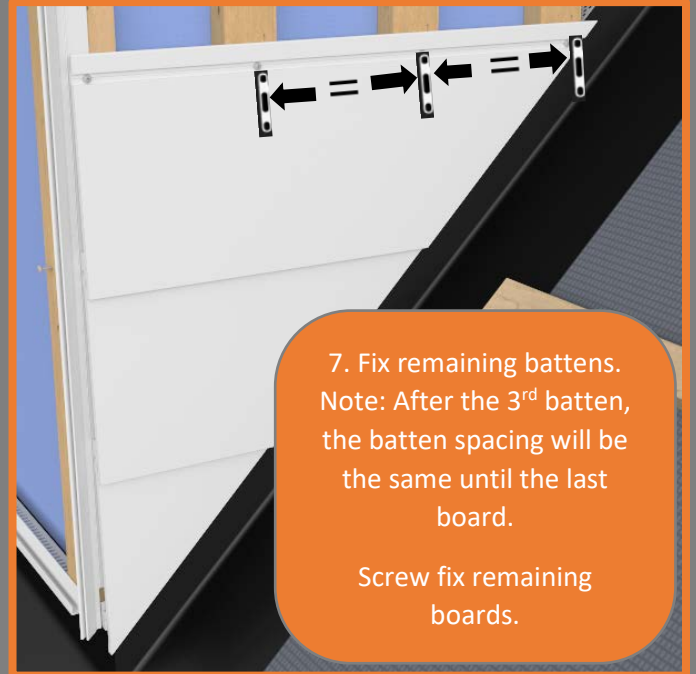
# DORMER CHEEK CLADDING INSTALLATION

Based on 45° roof



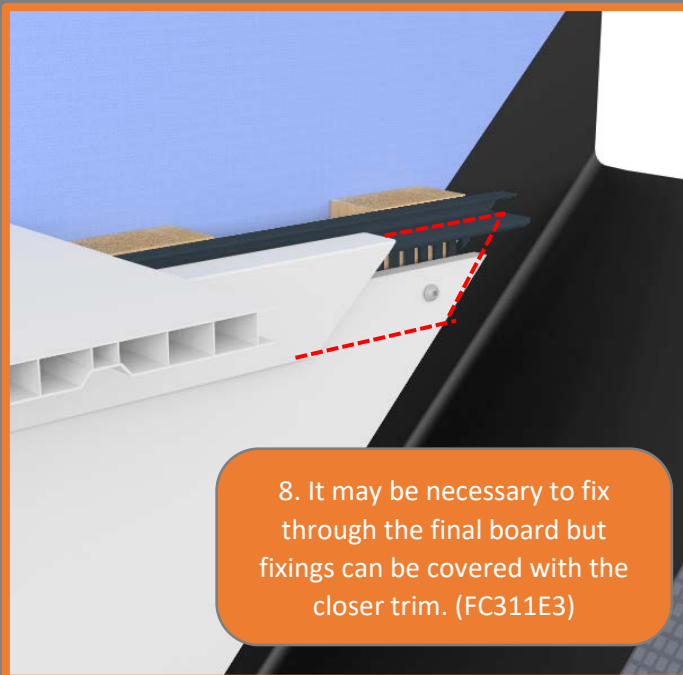


6. Cut next cladding plank to match angle of roof, use the plank to determine position of 3<sup>rd</sup> plank. Slot into previous plank and screw fix in place.

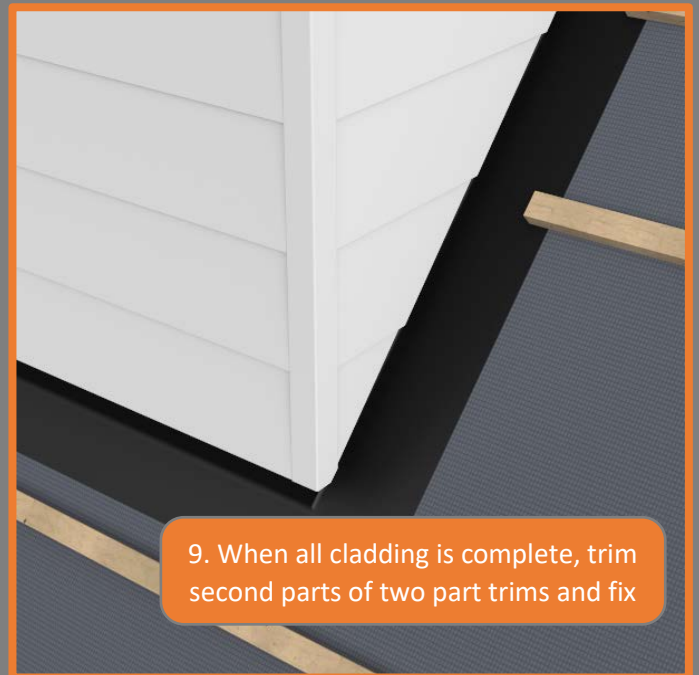


7. Fix remaining battens. Note: After the 3<sup>rd</sup> batten, the batten spacing will be the same until the last board.

Screw fix remaining boards.



8. It may be necessary to fix through the final board but fixings can be covered with the closer trim. (FC311E3)



9. When all cladding is complete, trim second parts of two part trims and fix

77-83 St James Mill Road  
Northampton, NN5 5JP  
T: 01604 591110

Central Commercial Park  
Centre Park Road  
Cork, T12 KC96  
T: 021 496 6311  
[www.freefoam.com](http://www.freefoam.com)

  
**Freefoam**  
Building Products

All specifications, dimensions, descriptions and illustrations contained in Freefoam sales literature are intended merely to present a general idea of the goods we sell.